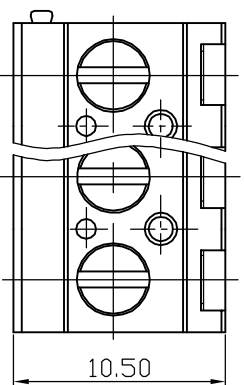


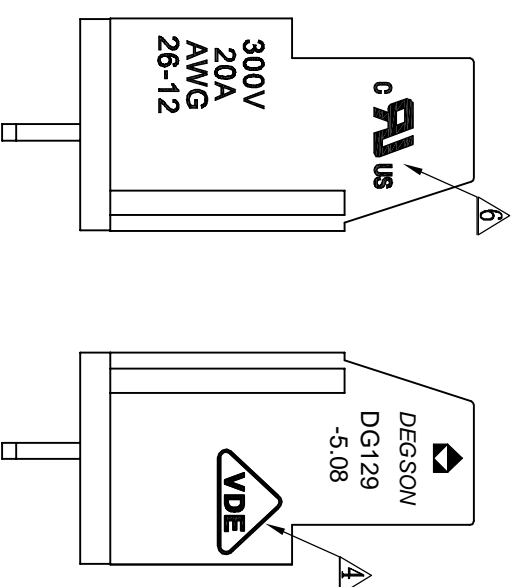
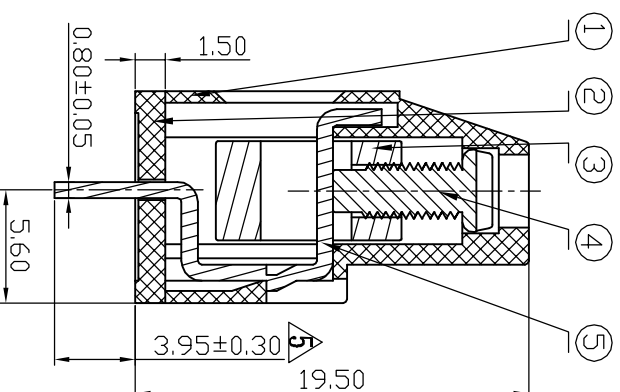
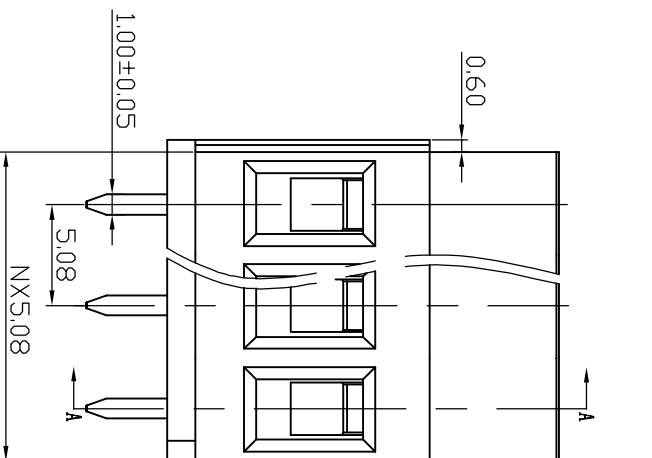
REVISION RECORD				
REV	ECO	DESCRIPTION	DRFT	DATE
3		Drawing Revise	Heqin	03/30/06
4		增加D10刻字	CSX	01/12/07
5		出料由3.85改为3.95±0.30	CSX	02/03/07
6		压痕处去掉外圆	CSX	06/09/07

Notes:

1. Pitch: 5.08mm
2. Rated voltage: 300V
3. Rated current: 20A
4. Insulation resistance: 5000MΩ/DC1000V
5. Withstanding voltage: AC2000V/1min
6. Wire range: 26-12AWG 2. 5mm²
7. Temp. Range: -40°C~+105°C
8. Torque: 5. 1kgf. cm
9. Undimensioned Tolerances:



Pitch range in mm	Normal dimension range in mm					
over 6	over 10	over 6	over 30	over 90	over 200	—
to 6	to 10	to 6	to 30	to 90	to 200	()
to 10	to 24	to 6	to 30	to 90	to 200	□
±0,10	±0,15	±0,25 ± 0,1	±0,2 ± 0,3	±0,5 ± 0,7	±0,65 ± 0,8	



SECTION A-A

5	DG129-Pin header	4029B00010 (H)	XX	Barss	SnCe
4	DG129-Screws-M3	S0000001430 (H)	XX	Steel	Cr Zn
3	DG129-Cage	X000000200 (H)	XX	Brass	Ni plated
2	DG129-5-08-Cover	4042C01XXA (H)	1	PA66	UL94V-0

[illegible]