

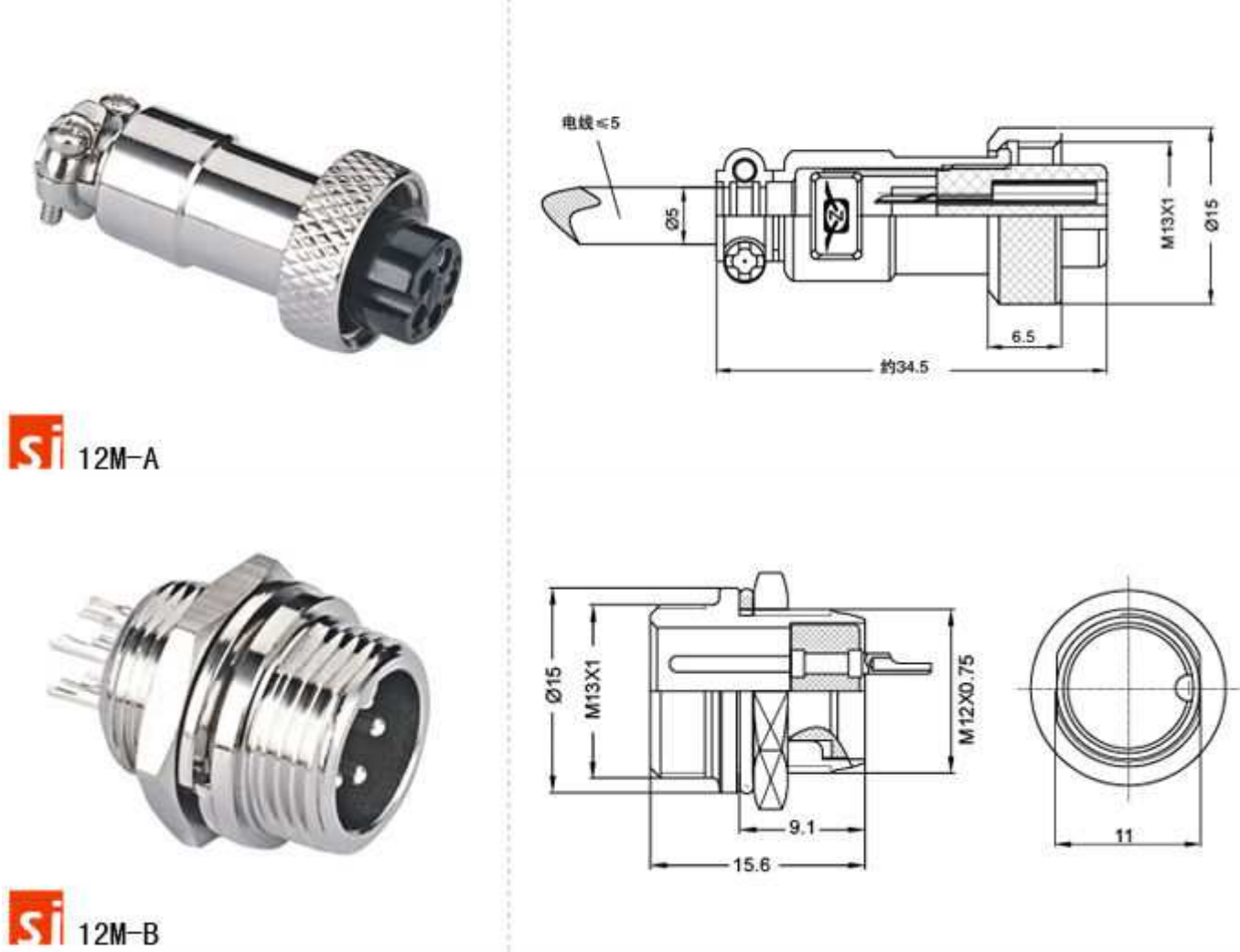
Detailed Product Description

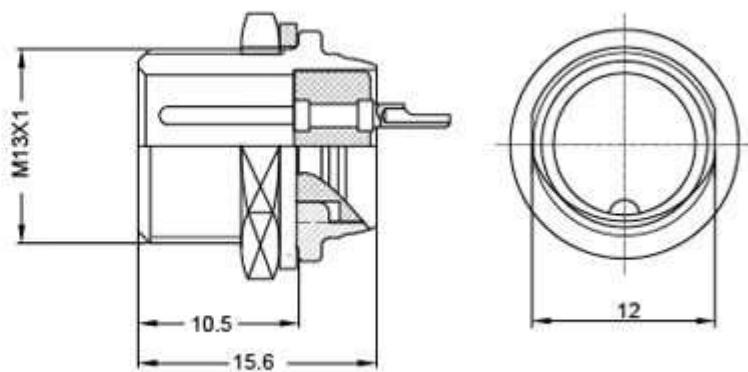
- 1.M12 series Products widely used in household appliances electrical, instrumentation, aerospace, communications, and other fields
- 2.The connector takes the form of push ball locking connection,quick and easy for inserting and withdrawing.

Product parameter

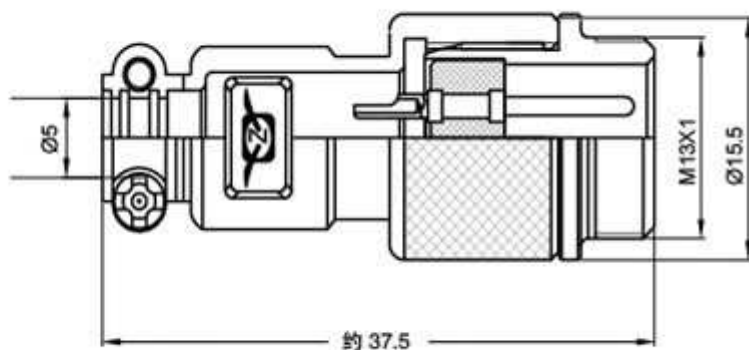
Ambient temperature:	-22~+85°C
Relative humidity:	Temperature is 40 centigrade reach 93%
Insulation resistance:	normal temperature 1500MΩ
Rated current:	5A
Vibratioin:	Frequency 0~500HZ,reach 100m/s²
Collision:	Acceleration 250m/s²
Mechanical life-span:	500 times

Product structure diagram



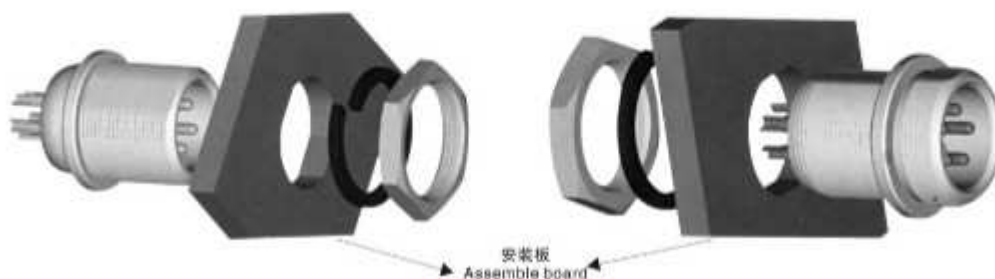


si 12M-F



si 12M-K

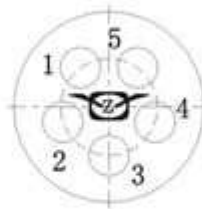
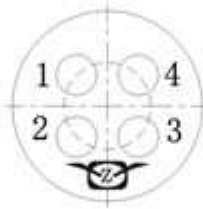
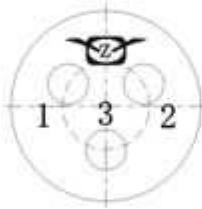
Assemble Way 安装方式





The Hole Place Arranges(comply With The Needle Direction)

孔位排列(从针的方向看)



Technology Parameter

技术参数

芯数 No. Of contacts	2	3	4	5	6
额定电流/电压 Rated current/voltage	5A-125V	5A-125V	5A-125V	5A-125V	5A-125V
工作电压(AC.V)分钟 Operation limit voltage(AC.V.rms)	200	200	200	200	200
耐电压(AC.V)分钟 Withstanding voltage(AC.V.rms) 1 minute	1500	1500	1500	1500	1500
绝缘阻抗(MΩ)dc500v Insulation resistance(MΩ min.) at dc 500V	1500	1500	1500	1500	1500
接触阻抗(MΩ)dc1a Contact resistance (MΩ max.) at dc 1A	10	10	10	10	10
焊杯口径Φ(mm) Solder cup mouth aperture	0.9	0.9	0.9	0.9	0.9
接触体孔径Φ(mm) Solder inter diameter	1.15	1.15	1.15	1.15	1.15